



SIEMENS

Global network of innovation

HiPath 1100 –
convenient communication
for small and medium-sized
companies.

www.siemens.com/hipath

Communication that fits perfectly.

You manage a legal practice, or run a workshop? Perhaps you're a doctor or you manage a production company? You have a large number of customers, whom you know only over the phone, are always on call for your patients or are constantly in phone contact with your suppliers? If this is the case, you need a powerful telephone system that is future-proof, and that can be adapted perfectly to suit the size of your company. With HiPath 1100, Siemens offers you the right solution.

HiPath 1100 is the high performance phone family, made up of four systems, for companies with up to 140 users. With ADSL broadband access, HiPath 1100 offers tomorrow's communication technology. Integrated options, such as CLIP analog make your communication even more flexible. And HiPath 1100 is an especially cost-effective communications solution, not only in terms of purchase price, but also for installation and operation. It is especially simple to install and administer with the Windows Service Tool. New software ver-

sions are run via PC and the internet - conveniently and free of cost. Applications are straightforward to connect via the integrated V24 connection. And if your requirements change? No problem - with HiPath 1100 you can change up to ISDN at a later date. And HiPath 1100 phone systems always fit. The various models meet your requirements - from 16 to 140 users with between 6 and 32 lines. **HiPath 1100 - the smart phone system for demanding customers.**

HiPath 1100 features.

HiPath 1100 range - basic voice features

- Access category for night service
- ACS Alternative Carrier Selection
- Alarm announcement
- Association of caller number with HiPath 1100 speed dial name
- Auto attendant with announcement
- Auto hands free activation and deactivation on key sets
- Baby phone/paging with ext. access
- Call back - on busy and no answer
- Call barring with country default
- Caller list
- Call forwarding: internal/external
- Call hold /park

- Call group (default 1st 10 extension)
- Call pickup: group/selective
- CLIP info in each ext. CLIP phone
- CTI protocol via V.24
- Conference
- Consultation with attendant console
- Do not disturb
- DTMF suffix dialing
- Electronic lock
- Emergency call
- Event signaling (fax, printer)
- External dialing restriction
- External call diversion
- Extension name display

- Flash on trunk
- Hunt group (linear/cyclic)
- Music on hold
- MW on each CLIP device
- Night service
- Number redial
- Remote programming
- Programmable keys
- Sensor/relay features
- Speed dial central (90 x 30 long)
- Secretarial service (associated call)
- UCD statistical software
- Wake-up call
- VMle - extended Voice Mail Interface



New and additional features V5.2

Administration Features

- Administration over ISDN and USB
- Automatic In-Service of all extensions
- Automatic Remote Software Update
- Connected Phone recognition and report
- D-Channel Tracing
- MIDI file playback for Music on Hold
- Remote administration with password

Miscellaneous Features

- Call Timer for limited conversation

Sensors and Relays Features

- Activation by consultation on hold
- Relays control and status check for: switch, toggle & mono-with acknowledge

Fax Gr. 3&4 Software

- 1st attendant de-/activation by Admin
- Call answering service
- Call cost in the display (via TAPI)
- CF from Call Group (agent int. or ext.)
- Delayed call
- DISA Direct inward dialing
- Euro file Transfer
- Feature ACS replaced by LCR.
- Internet access (through Dial-up Net)
- LED Status display

PC-Software Features

- CDR (call charge with export function)
- Graphical LCR prog. tool (via Manager)
- NDIS WAN Drv with dyn chn grouping

Option ISDN features

- AOC Call Charge
- CCBS Call Complete to Busy Subscriber
- CFB Call Forward Busy
- CFNR Call Forward no reply
- CFU Call Forward Unconditional
- CLIP Calling Line Identity Presentation
- CLIR Calling Line Identity Restriction
- COLP Connected Line Presentation
- COLR Connected Line Restriction
- DID Direct Inward Dialing
- MSN Multiple Subscriber Numbering
- PMP Point to Multipoint
- PP Point to Point
- S₀ trunk lines supporting S₀ bus

Fully flexible - the wide range of configuration options.

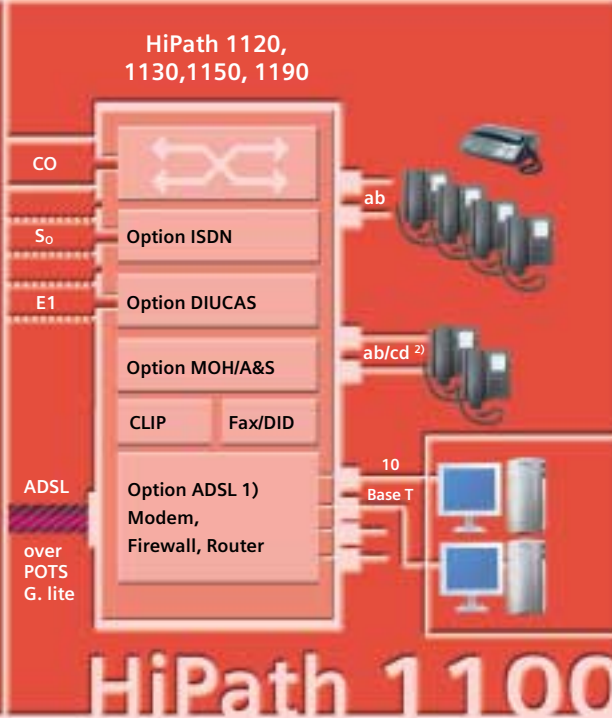


HiPath 1100 family configuration

Model	CO-Trunk analog		Extension	
	min	max	min	max
1120	2	6 ³⁾	8	16 ³⁾
1130	2	14	10	20
1150	2	16	10	50
1190	8	32	10	140

Channel-in options			
Model	ISDN ¹⁾	ADSL ¹⁾	TME1 digital
1120	2	1	-
1130	4-10	1	15
1150	4-10	1	15
1190	4-20	1	45

Option configuration:
 1) ADSL or ISDN (all Models)
 ISDN available in V5.2
 2) Out of total number of extensions
 3) only w/o ADSL or ISDN option
 1st EB204 beside the motherboard
 2nd EB204 in the option slot
 4) TME1 Board(s) with channel for
 HiPath 1130/1150 1x15
 HiPath 1190 up to 1x15+1x30



At a glance - HiPath 1100 V5.1 and V5.2 technical data.

Technical Data

Component	HiPath 1120	HiPath 1130	HiPath 1150	HiPath 1190
Basic box dimensions (MB)				
Length / Depth / Height	360 mm / 288 mm / 64,4 mm	470 mm / 370 mm / 72 mm	470 mm / 370 mm / 100 mm	420 mm / 394 mm / 498 mm
Weight	1.2 kg	3.65 kg	4.25 kg	22.5 kg
Electrical specifications of supply source (PSU)	110/127V: S30122-X7646-X100 230V: S30122-X7646-X	S30122-K7642-X2	S30122-K7642-X1	S30122-X7642-X
Supply characteristics (Input)	220V/127mA 127V/331mA	110-230V, Full range/1.5A	110-230V, Full range/1.5A	110-230V, Full range/1.5A
Operation frequency	50/60Hz	50/60Hz	50/60Hz	50/60Hz
Calling voltage	40 V _{ms} (50/60Hz)	50 V _{AC} + (50 V _{DC} /2) +26.0 V _{DC} 0.13 A/25Hz	50 V _{AC} + (50 V _{DC} /2) +26.0 V _{DC} 0.13 A/25Hz	50 V _{AC} + (50 V _{DC} /2) +26.0 V _{DC} 0.13 A/25Hz



Environmental Conditions	Operation	Transport	Storage
Air temperature (°C)	0 to +40	-25 to +70	-5 to +45
Relative air humidity	60% to 25°C	90%	5% to 95%

The perfect match: the Profiset family.

The Profiset family from Siemens is a range of attractive, exceptionally high performance phones, with a host of convenient functions.



Profiset 3005

- Mute
- Redial
- Flash programmable
- 14 Memories
- 3 ring volumes/melodies



Profiset 3010

like Profiset 3005 plus:

- Music on hold
- Electronical Key lock
- Function keys



Profiset 3015

like Profiset 3010 plus:

- Hands Free
- LCD display
- 16 memories



Profiset 3020

like Profiset 3010 plus:

- CLIP (FSK)
- LCD backlight
- Memories
- Incom. caller list



Profiset 3025 (Brazil)

like Profiset 3010 plus:

- CLIP (DTMF)
- LCD backlight
- Phone book
- Incom. caller list



Profiset 3030

like Profiset 3015 plus:

- c/d Interface
- Hands Free
- Power Fault
- 16 signal keys



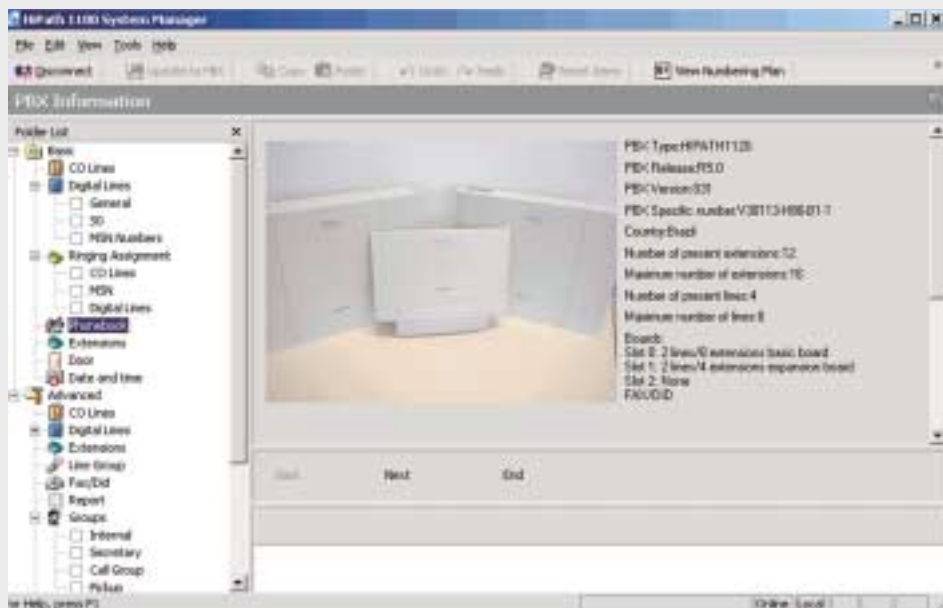
www.siemens.com/hipath

Fully straightforward – the convenient administration functions.

The HiPath 1100 telephone system supports you with many convenient functions for installation and operation.

- Administration by extension
- Administration via V24 or USB* and ComServer (required)

- Automatic in-service on all extensions
- (Automatic)* remote software update from PC via internet and ISDN
- Country-specific configuration
- Remote administration
- *** Supported in version 5.2**



© Siemens AG 2005 • Communications • Hofmannstr. 51
D-81359 München

Order No. A50001-N14-W127-3-7600

The information provided in this brochure contains merely general descriptions or characteristics of performance which in case of actual use do not always apply as described or which may change as a result of further development of the products. An obligation to provide the respective characteristics shall only exist if expressly agreed in the terms of contract. Availability and technical specifications are subject to change without notice.

The trademarks used are owned by Siemens AG or their respective owners.

Printed in Germany.