

# RESCUE DATA LIKE A HERO!

Backup. Recover. Protect.

  
Microsoft  
Windows Server System

Microsoft  
System Center  
Data Protection Manager

Microsoft®

# System Center Data Protection Manager

As the latest member of the Windows Server System™ family, Data Protection Manager (DPM) is a server software application that is designed from the ground up to optimize disk-based backup and recovery. By backing up data to disk, Data Protection Manager provides the fastest way to recover data lost either due to user error or software and hardware corruption. With Data Protection Manager, recovering information is as simple as browsing a share and copying directly from the Data Protection Manager server to the production server.

Organizations today are facing increasing pressure to do more with less, especially as it pertains to backing up crucial enterprise data. DPM allows enterprises to increase the efficiency of common backup and recovery tasks. DPM offers near continuous and efficient protection of your file servers, while enabling rapid and reliable recovery of those servers and the shares and files on them. DPM works with Microsoft® Windows Server™ 2003 and Windows® 2000 Server file server technologies to deliver low total cost of ownership (TCO), by overcoming the deficiencies and cost of tape-based backup systems—essential objectives of enterprise computing infrastructures. DPM includes an exciting set of customer-focused services to increase return on investment (ROI) and enhance end-user productivity.

To ease the pain of data backup and restore, Microsoft has created Data Protection Manager.

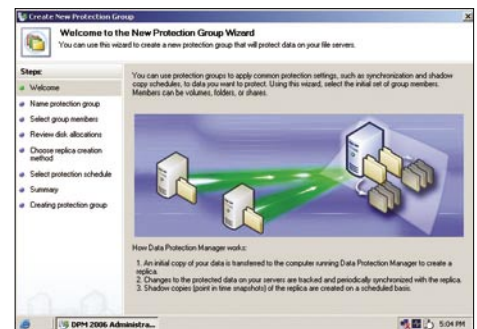
## Key Benefits

- Rapid and reliable recovery
- Efficient, near continuous protection
- Operational simplicity
- Back up data at any time without impacting your production servers
- Faster, more efficient backup
- Enable end-user recovery
- Eliminate open file backup issues
- Integration with Microsoft Operations Manager

## Key Components

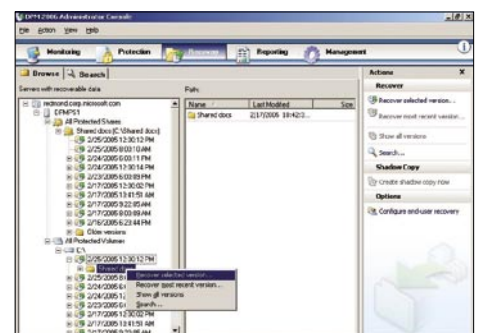
### Backup and Restore Wizards

- Set Windows file server protection policies with a couple of clicks.

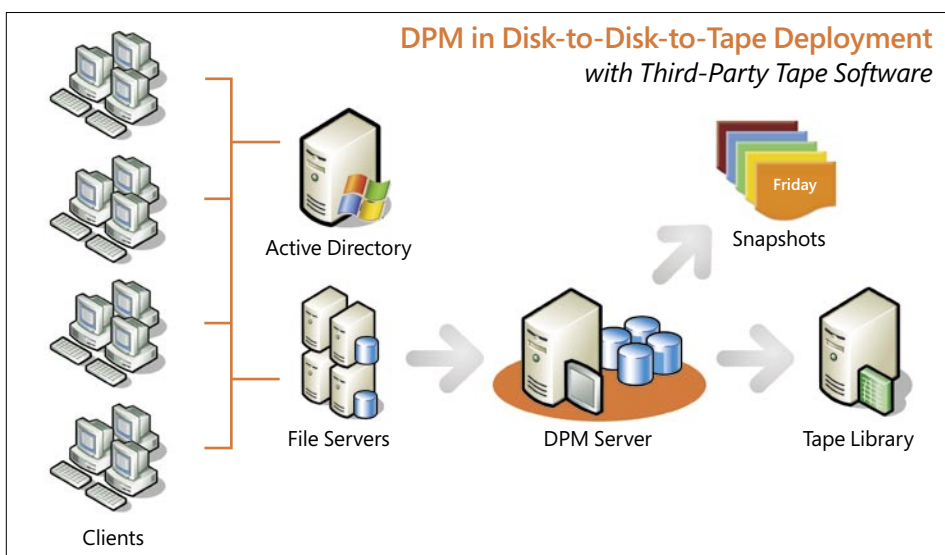


### Comprehensive Recovery and Verification

- Administrators can now have complete control and real-time information on the status of their data backups.



With the explosion of data growth and the need to make data persistently available, now is a great time to start your disk-based backup plan for your Windows-based file servers.



Find Out More About DPM at:

<http://www.microsoft.com/dpm>